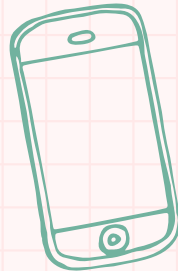
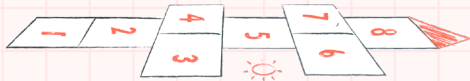


WELCOME TO THE PARTICIPATORY PLAYGROUND!

Take a seat and
take our poll!

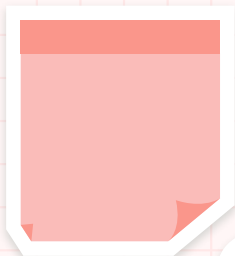


Scan the QR code with your phone's camera



PARTICIPATORY PLAYGROUND

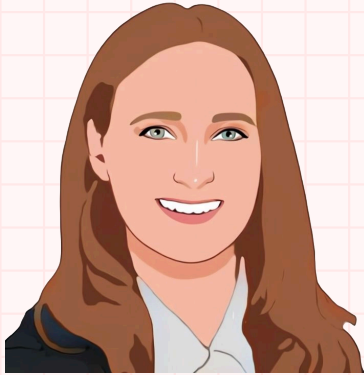
A Fun Space to Explore Participatory Evaluation



American Evaluation Association 2022



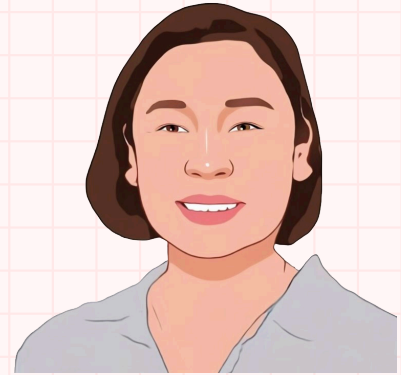
ABOUT US



MEGHAN HUNT
mhunt@engagerd.com



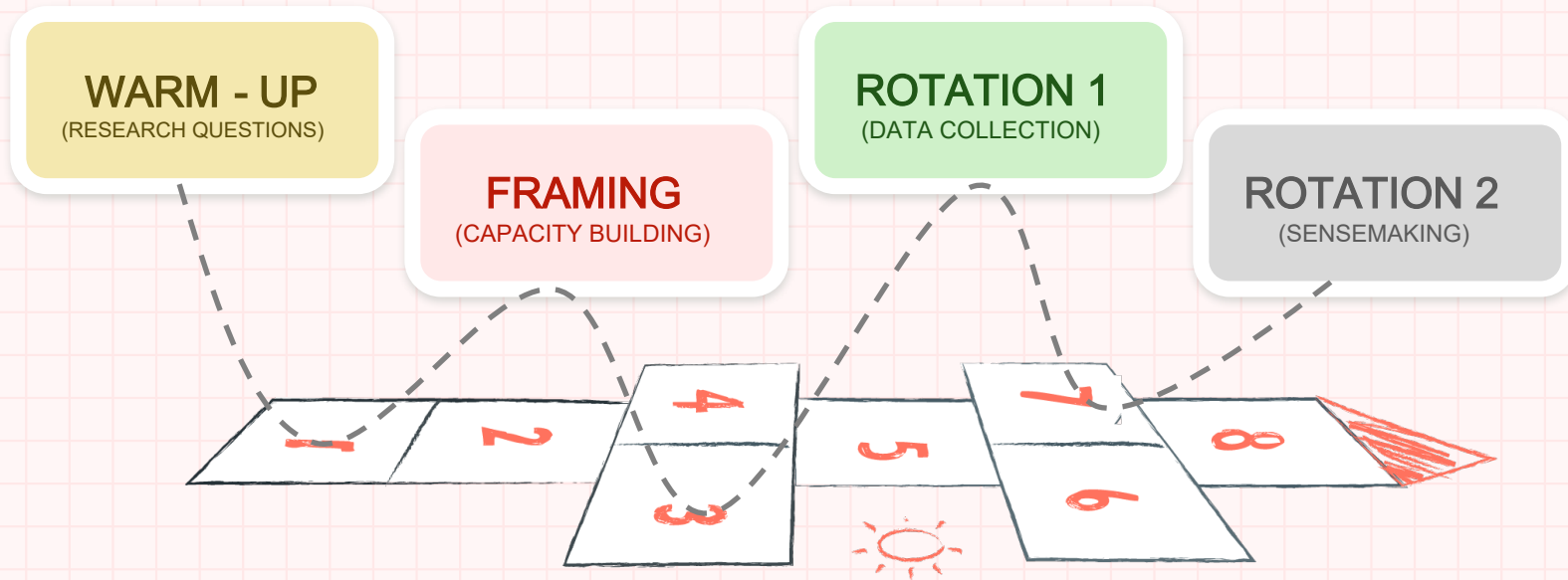
CRISTINA WHYTE
cwhyte@engagerd.com



ERIKA TAKADA
etakada@engagerd.com



TODAY'S AGENDA



WHAT IS PARTICIPATORY EVALUATION?



WHO

CONVENTIONAL

Researchers collect information from program participants

PARTICIPATORY

Those with lived experience are empowered to conceive of, design, carry out, and make sense of the evaluation with support from a facilitator

WHY

CONVENTIONAL

Focus on accountability
and/or effectiveness

PARTICIPATORY

Focus on useability, including
how participants can own their
data, learn, and implement
changes

HOW

CONVENTIONAL

Researchers

- ✓ Use externally defined indicators
- ✓ Value “scientific objectivity”
- ✓ Prioritize quantitative data

PARTICIPATORY

Participants

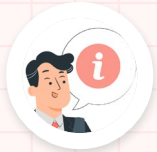
- ✓ Use internally defined indicators
- ✓ Value multiple ways of knowing
- ✓ Use participatory tools



PARTICIPATORY FRAMEWORKS



SPECTRUM OF PARTICIPATION



INFORM

“Here’s what’s happening”

- fact sheet
- phone calls/emails
- social media
- website



CONSULT

“Here are some options, what do you think?”

- survey
- poll/voting
- comment box
- public meeting



INVOLVE

“Here’s a project, what ideas do you have?”

- advisory board
- interactive workshops
- community forum



COLLABORATE

“Let’s work together on this project.”

- MOUs
- citizen advisory committee
- working group

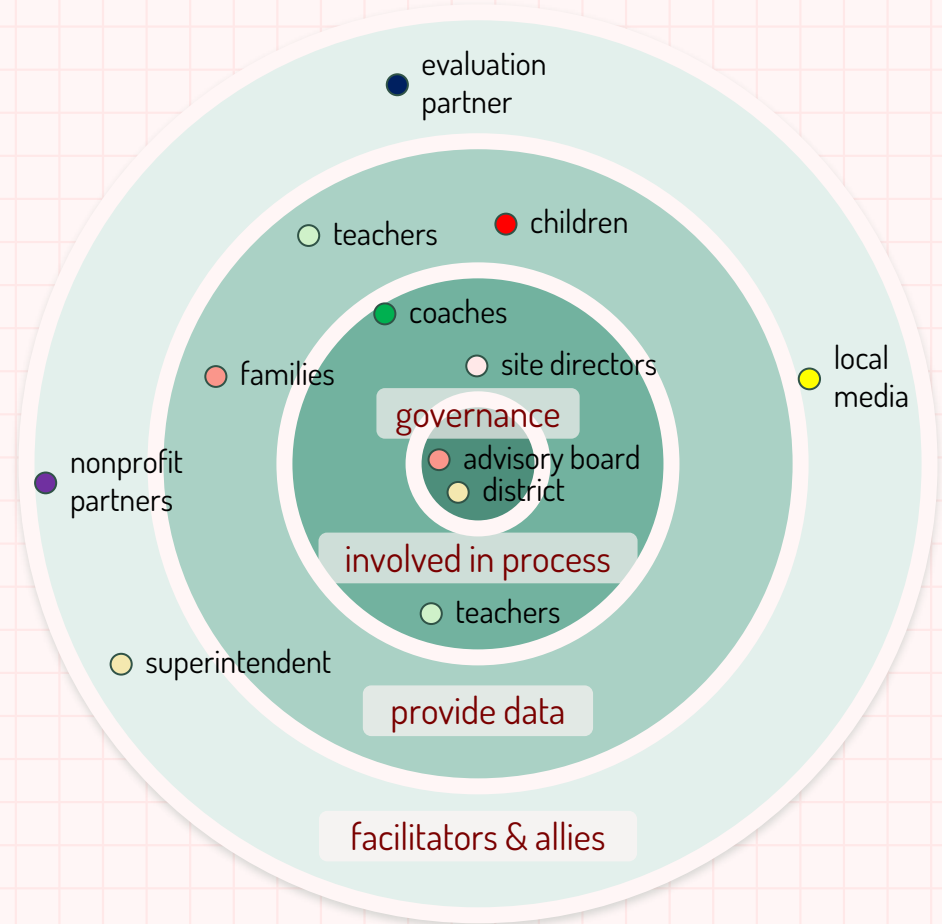


EMPOWER

“You care about a project. How can we support you?”

- community planning
- participatory budgeting
- cooperative

CIRCLES OF PARTICIPATION

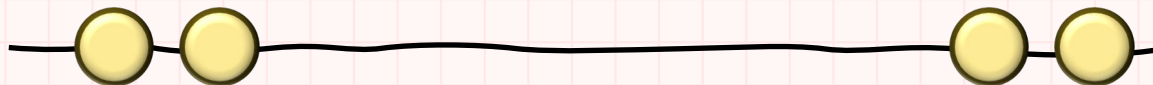


HOW MIGHT YOU SHARE POWER ?

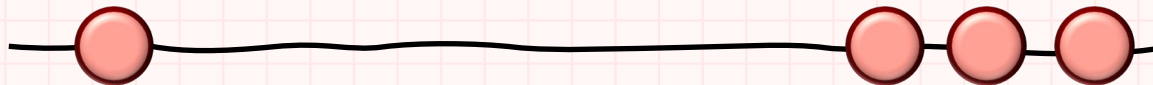
COMMUNITY

EVALUATOR

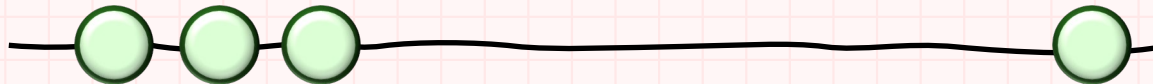
Decide on research questions



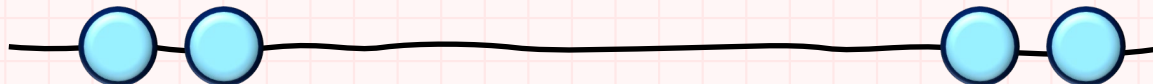
Collect data



Interpret data



Share findings





WHEN TO DO PARTICIPATORY EVALAUTION



When there is buy-in:

- ✓ Cost (resources, time, compensation)
- ✓ Capacity
- ✓ Interest in power sharing, including clear expectations of what power will be shared
- ✓ Ability to work through conflict
- ✓ Relationship building

When the participant perspective makes sense:

Participants have questions they are motivated to answer:

- ✓ Needs assessment
- ✓ Initiative/strategy design
- ✓ Measuring impact

Less helpful for:

- x Funder accountability metrics
- x Planning around internal dynamics
- x When there is no clear plan for how to use the data

When there's an opportunity to build capacity:

- ✓ Evaluation capacity
- ✓ Advocacy capacity
- ✓ Leadership capacity

KEY TAKEAWAYS

POWER - SHARING

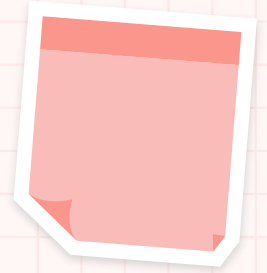
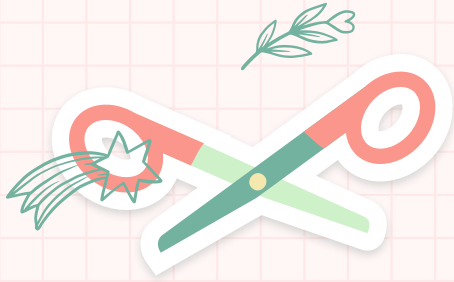
- ✓ Levels of participation
- ✓ Areas of participation: design, data collection, analysis, and reporting

DATA COLLECTION

- ✓ Photovoice
- ✓ Most Significant Change

SENSEMAKING

- ✓ Headline findings
- ✓ Collective sensemaking



DOWNLOAD RESOURCES AT
www.engagerd.com/aea

