



# Evaluation With Aloha:

Participatory Methods as a Vehicle for a Trauma-Informed Evaluation

Cristina Whyte and Erika Takada



# AGENDA

**01**

## Background

Why should evaluators be trauma-informed?

**02**

## Context

*Promising Minds* project in Hawai'i and our role

**03**

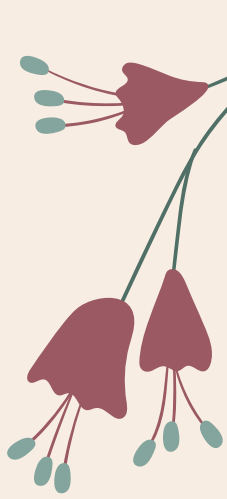
## 6 Principles of TIC

6 Principles of TIC in practice!

**04**

## Tips and Ideas

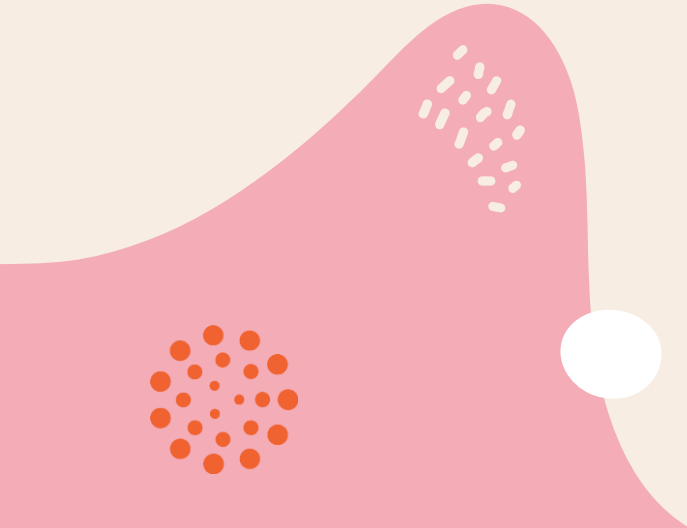
How can this work for you?



# Background

01

Why should evaluators be trauma-informed?



# Case for a Trauma-Informed Evaluation

- Past harm by researchers and evaluators
- Evaluation can feel expert-led, white-dominant, academic or funder-driven
- Recognize trauma in communities, staff, system
- Acknowledge cultural and community roots and experts
- Respond through trauma-informed practices, procedures and policies
- Evaluative work should benefit and be in service to the community - even healing if possible.

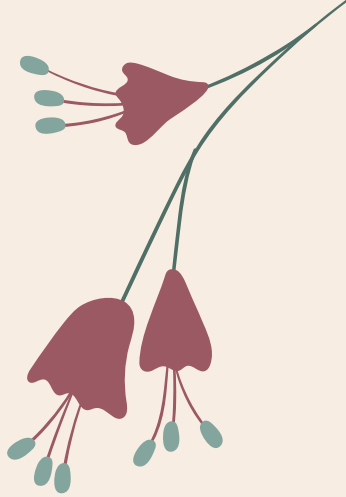


# Participatory Evaluation



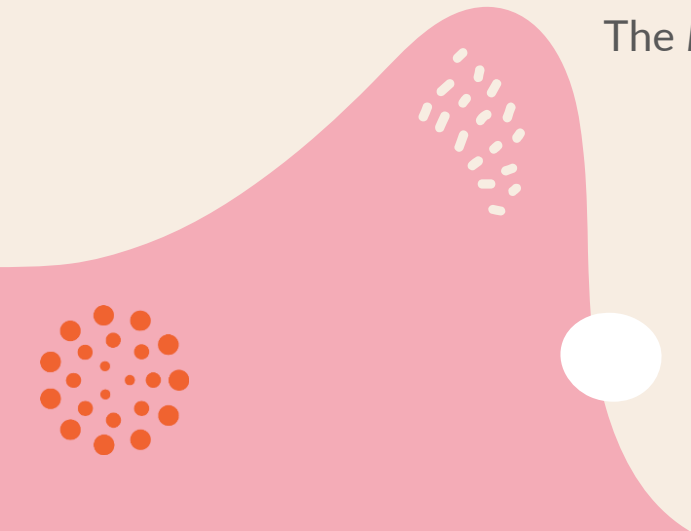
- Evaluation is locally and culturally relevant to community
- Fosters local ownership of data and learning
- Greater accuracy and relevance of findings
- Participants are empowered to engage, build capacity of evaluation and connect with others.
- Values multiple ways of knowing
- People with lived experience are co-designers and analysts with support from facilitators.





# Context

The *Promising Minds* project and our role



# ***Promising Minds***

- Funded by the Hawai'i Community Foundation and partners
- Aims to equip early childhood educators and practitioners with trauma informed strategies, tools and support
- Strategies: professional development, systems improvement, policy change
- Families and children develop resilience, healthy and on track
- Center the spirit of Aloha and Ohana in their approach



# Our Role



- Evaluation and learning partner brought on at the start of the initiative
- Step back and listen, develop relationships
- Allow ourselves to be taught
- Co-design and build capacity
- Generate and receive data that are authentic and honors context and culture
- Focus on evidence of resilience as a key outcome
- Evaluation done with and by communities rather than to and for communities.



# Photovoice

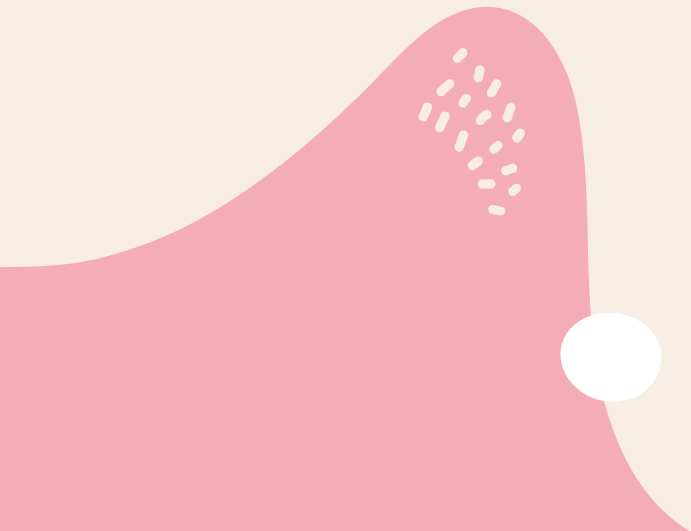
- Entrusts cameras to the hands of people to enable them to act as **recorders, and potential catalysts for change**, in their own communities
- **Collect evidence** and promote an effective, **participatory means** of sharing expertise and knowledge
- Understand the lasting effects of *Promising Minds* - **evidence of resilience**
- Take pictures that highlight ways children are thriving
- Learn how the lives of children and families can be improved.





# Principles of TIC

What do the 6 principles of trauma-informed care look like in practice?



# 6 Principles of Trauma-Informed Care



## Safety

Staff and people they serve feel physical and emotional safety

## Trustworthiness and Transparency

Operations and decisions are conducted with transparency with a goal of building and maintaining trust

## Peer Support

Use peer support and mutual self-help with stories and lived experience to promote recovering and healing

## Collaboration and Mutuality

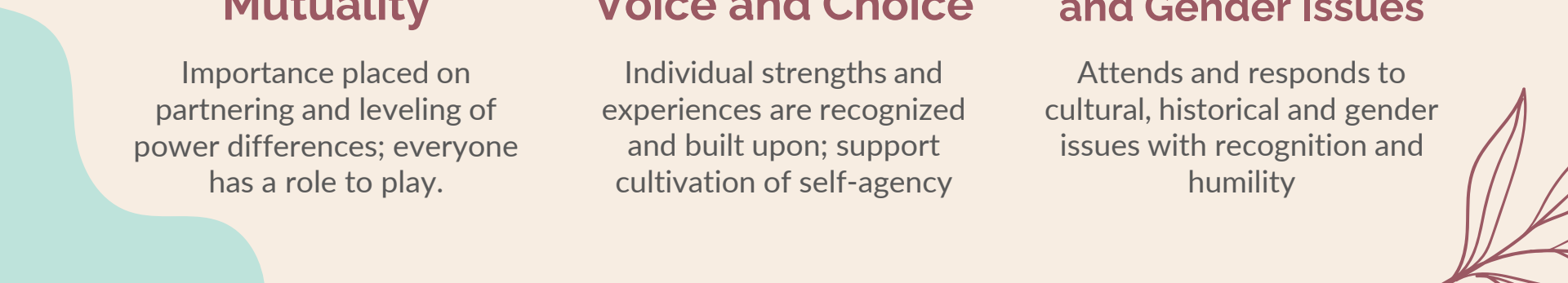
Importance placed on partnering and leveling of power differences; everyone has a role to play.

## Empowerment, Voice and Choice

Individual strengths and experiences are recognized and built upon; support cultivation of self-agency

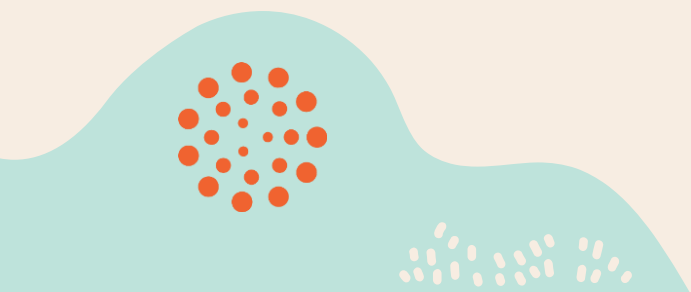
## Cultural, Historical and Gender Issues

Attends and responds to cultural, historical and gender issues with recognition and humility



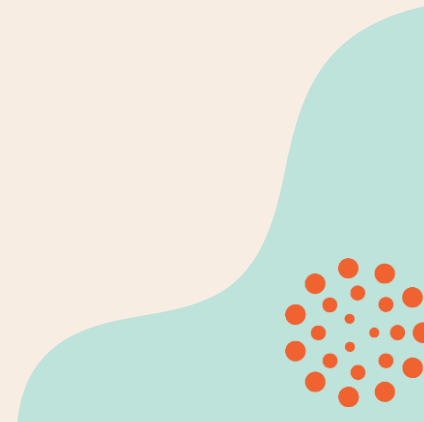
# 1. SAFETY

- **Community partners engaged with families** to ensure psychological and emotional safety of families and keiki to share photos
- Online survey and training video for **virtual data collection** during COVID pandemic





## 2. TRUSTWORTHINESS AND TRANSPARENCY

- **The Hawai'i Community Foundation** is a trusted organization by the community - from how they invest in communities, to representation of staff, and their respect of cultures in Hawai'i.
  - **Photo release** clearly explained how photos and information may be used - crucial to **ensure that participants are not re-traumatized**.
- 

### 3. PEER SUPPORT

- **For Data Collection:** We trusted ohana and caregivers to lean on each other to interpret photos taken of their keiki and how they describe childhood resilience.



“The little moments of connection with kids make a huge impact in their lives and development.”



# 4. COLLABORATION AND MUTUALITY

- Community partners used **photovoice** as a form of **therapy** to assist ohana and caregivers **interpret interactions** with their keiki and **identify strategies** to better meet their needs.

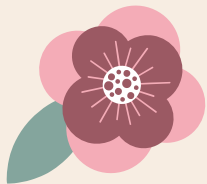
*This is data!*

4. Collaboration  
and Mutuality



## 5. EMPOWERMENT, VOICE AND CHOICE

- Photovoice guiding questions were framed in an **asset-based** way focusing on the resilience of keiki and their positive development.
- Parents and **caregivers defined resilience** based on their photos
- **Voice of ohana and caregivers were honored** as much as possible during analysis and dissemination (see posters)





## Promising Minds Family Photovoice Project

Aloha and thank you for participating in the Promising Minds Photovoice Project! We are interested in understanding the lasting effects of the Promising Minds program on families and children. Please use this site to upload pictures that highlight ways in which the children in your care are thriving and how the lives of your children/family or families in your community could be improved.

After you upload the photo(s), please fill out the questions explaining your photo(s). Please feel free to contact the practitioner that recommended you for this project or Cristina Whyte (cwhyte@engagerd.com) if you have any questions. Thank you!

Which care organization approached you about participating in the Promising Minds Photovoice Project? \*

1. Partners in Development Foundation
2. Keiki O Ka Aina Preschool Inc.
3. Family Support Services of West Hawaii
4. Imua Family Services

Please upload your photo. \*

 Add file

 View folder

Please upload your photo.

 Add file

 View folder

Please upload your photo.

 Add file

 View folder

Describe these picture. What is happening in your pictures? \*

Long answer text

Why did you take pictures of these subjects? \*

Long answer text

What do these pictures tell us about your life, your family's life, the lives of children in your care, or life in your community? \*

Long answer text

What kind of message can these pictures send to people who care for your children and other children in Hawaii? \*

Long answer text

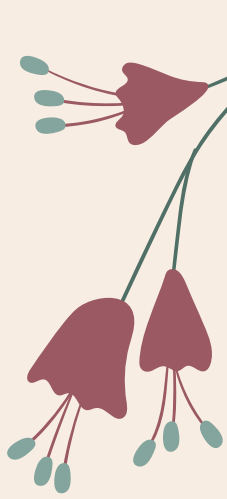
Anything else?

Long answer text

## 6. CULTURAL AND HISTORICAL ISSUES

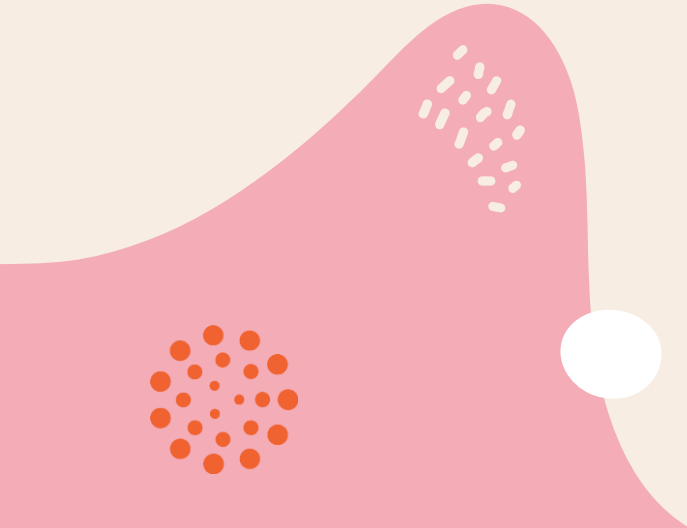
- Community oriented nature of Hawaiian culture was an asset for this effort. Families wanted to do their part to improve outcomes for children in Hawai'i - a way to **capture stories of resilience in the Hawaiian context.**
- Reminder to **do no harm**





# Tips and Ideas

How can this work for you?



# thank you !

Reach out to us!

etakada@engagerd.com  
cwhyte@engagerd.com



CRÉDITS : Ce modèle de présentation a été créé par **Slidesgo**,  
comprenant des icônes de **Flaticon** et des infographies et des  
images de **Freepik**

Veuillez conserver cette diapositive pour l'attribution